

SITE COORDINATION PHASING PLAN  
FOR

NEW 37 STORY RESIDENTIAL BLDG  
AT

400 WEST 61ST STREET  
(RIVERSIDE CENTER BUILDING 1)  
NEW YORK, NY 10069

DATE: JUNE 11, 2018

DRAWING LIST:

SSP-000.11	COVER SHEET		
SSP-001.11	GENERAL INFORMATION AND TYPICAL SAFETY NOTES		
SSP-002.02	TYPICAL SAFETY DETAILS	ALREADY APPROVED ON 6/10/16	
SSP-002A.00	TYPICAL SAFETY DETAILS II		
SSP-003.00	FENCE DETAILS		
SSP-099.01	OVERALL SITE PLAN		
SSP-100.01	EXCAVATION PHASE (OPTION 1) SITE SAFETY PLAN	ALREADY APPROVED ON 3/15/16	
SSP-100A.00	EXCAVATION PHASE (OPTION 2) SITE SAFETY PLAN		
SSP-101.01	FOUNDATION PHASE (OPTION 1) SITE SAFETY PLAN		
SSP-101A.00	FOUNDATION PHASE (OPTION 2) SITE SAFETY PLAN		
SSP-101B.01	SUPERSTRUCTURE PHASE BELOW 75'- PHASE A (5TH FL SHOWN) SSP	ALREADY APPROVED ON 2/02/17	
SSP-101C.02	SUPERSTRUCTURE PHASE BELOW 75'- PHASE B (5TH FL SHOWN) SSP		
SSP-102.03	SUPERSTRUCTURE PHASE BELOW 75'- PHASE C (5TH FL SHOWN) SSP	ALREADY APPROVED ON 11/09/17	
SSP-103.03	SUPERSTRUCTURE PHASE ABOVE 75' (MAIN ROOF SHOWN) SSP		
SSP-104.04	FACADE INSTALLATION PHASE (5TH FLOOR SHOWN) SSP		
SSP-200.00	HORIZONTAL SAFETY NETTING AND COCOON LOCATION PLAN (MAIN ROOF SHOWN)	ALREADY APPROVED ON 6/22/17	
SSP-300.02	NORTH FACADE ELEVATION		
SSP-301.02	SOUTH FACADE ELEVATION		
SSP-302.02	EAST & WEST FACADE ELEVATION		
SSP-303.02	NORTH FACADE ELEVATION(FACADE INSTALLATION PHASE)		
SSP-304.02	SOUTH FACADE ELEVATION(FACADE INSTALLATION PHASE)		
SSP-305.02	EAST & WEST FACADE ELEVATION(FACADE INSTALLATION PHASE)		

NEW BUILDING

ADDRESS: 400 WEST 61ST STREET  
NEW YORK, NY 10069  
BLOCK: 1171  
LOT: 154  
BIN# : 1089723  
COMMUNITY BOARD: 107  
ZONING DISTRICT: C4-7  
MAP: 8C  
HEIGHT: 37 STY @ 478'  
BLDG USE: RESIDENTIAL  
JOB #: 121193181

PLAN PREPARED BY:  
  
226 EAST MERRICK ROAD  
VALLEY STREAM, NY 11580  
(516) 256-0317

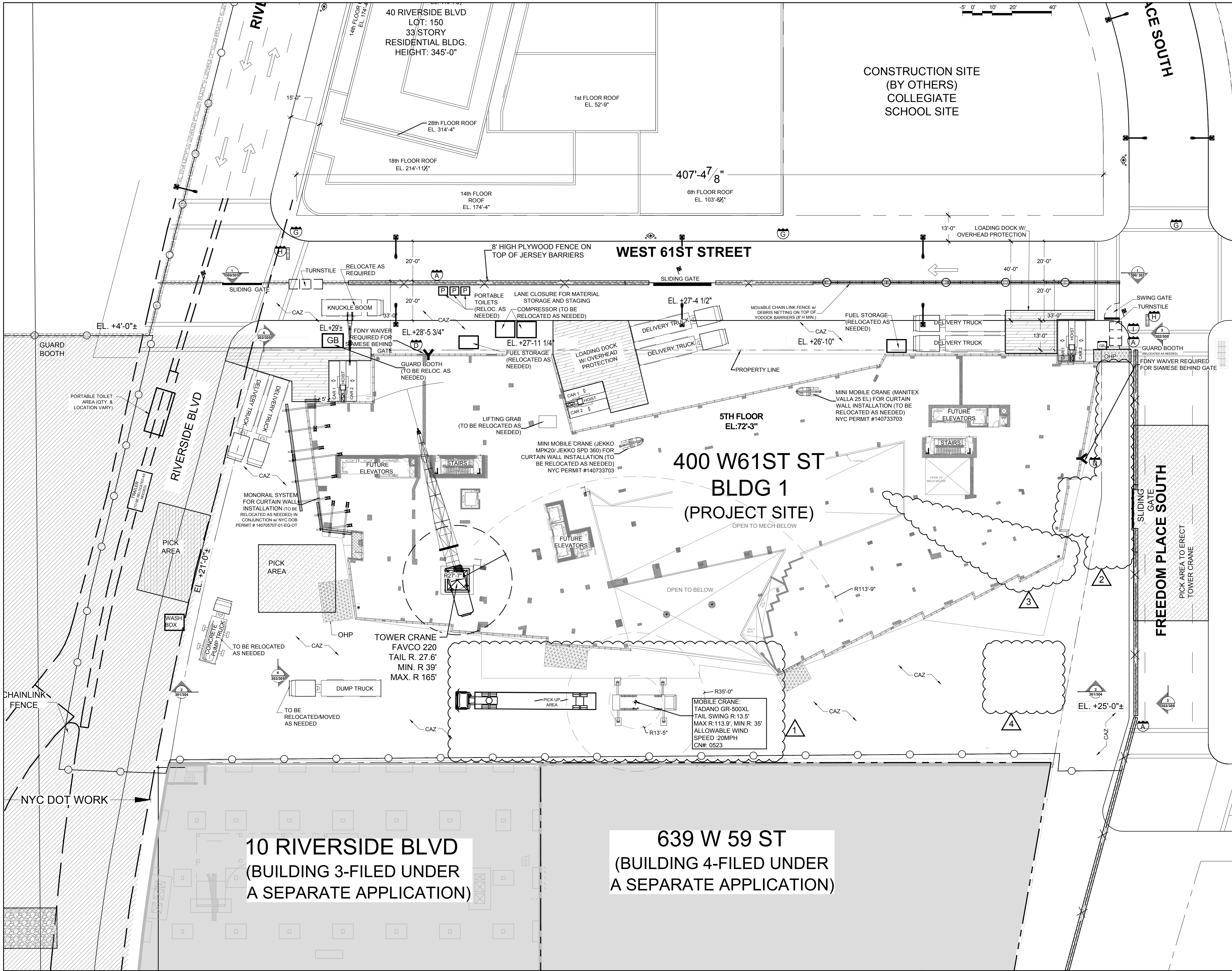
OWNER  
RCB1 NOMINEE LLC, A DELAWARE LIM  
125 HIGH STREET  
BOSTON, MA 02110  
212-878-3617

CONSTRUCTION MANAGER  
  
100 PARK AVE  
NEW YORK, NY 10017  
(917) 273-3450  
CONTACT: ROBERT HIGGINS



[illegible]

<div>400</div> <div>West 61st St</div> <div>Building 1</div> <div>New 37 Story Residential Bldg.</div>		<div>Site Coordination</div> <div>Phasing Plan</div>																																																	
APPLICATIONS & CONSIDERATIONS		OWNER																																																	
<div>JOB # 121193181 - NEW BUILDING</div> <div>EQ - CONSTRUCTION EQUIPMENT</div> <div>NB - NEW BUILDING</div> <div>OT - GENERAL CONSTRUCTION</div> <div>OT - STRUCTURAL</div> <div>MH - MECH/HVAC</div> <div>PL - PLUMBING</div> <div>OT - FOUNDATION</div> <div>OT - SOE</div> <div>JOB PERMIT # 121478828-01-EQ-FN</div> <div>(CHAN LINK FENCE)</div> <div>JOB PERMIT #121746487-EQ-FN</div> <div>(CHAIN LINK FENCE ON TOP OF JERSEY BARRIERS)</div> <div>400 W 61ST ST - CHAIN LINK FENCE W/DEBRIS NETTING</div> <div>APPROVED BY JOHN CHIUSANO ON 9/23/15.</div> <div>CN # 0849/15</div> <div>CD # 3087</div> <div>CD # 3093</div> <div>CD # 3709</div> <div>CD # 4379</div> <div>CD # 4495</div> <div>CD # 4010</div> <div>CD # 4139</div> <div>APPROVED FDNY WAIVER STANDPIPE/ SIAMESE</div> <div>CONNECTION LOCATED BEHIND CONSTRUCTION FENCE</div> <div>ISSUED ON 4/27/2017.</div> <div>NYC DOB PERMIT#140705707-01-EQ-OT</div> <div>(MONORAIL SYSTEM FOR CURTAIN WALL INSTALLATION)</div> <div>JOB PERMIT #140733703</div> <div>(TEMPORARY INSTALLATION AND USE OF</div> <div>A VALLA 25EL MINI-CRANE, JEKKO MPK20, JE)</div>		<div>RCB1 NOMINEE LLC, A DELAWARE LIM</div> <div>125 HIGH STREET</div> <div>BOSTON, MA 02110</div> <div>212-878-3617</div>																																																	
		ENGINEER / DESIGNER																																																	
		<div><div><div></div><div>CR SAFETY</div><div>construction &amp; rectly safety group</div></div><div>226 East Merrick Road</div><div>Valley Stream, NY 11580</div><div>(516) 256-0317</div></div>																																																	
		CONTRACTOR																																																	
		<div><div><div></div><div>TISHMAN</div></div><div>100 Park Ave</div><div>New York, NY 10017</div><div>(917) 273-3450</div><div>Contact: ROBERT HIGGINS</div></div>																																																	
		REVISIONS																																																	
		<table><tr><th>#</th><th>DATE</th><th>REVISION</th></tr><tr><td>—</td><td>02/18/14</td><td>Draft</td></tr><tr><td>—</td><td>02/21/14</td><td>Rev Draft</td></tr><tr><td>—</td><td>03/26/15</td><td>Rev Draft</td></tr><tr><td>—</td><td>06/09/15</td><td>Rev Draft</td></tr><tr><td>—</td><td>01/22/16</td><td>Rev Draft</td></tr><tr><td>—</td><td>05/22/16</td><td>Rev Draft</td></tr><tr><td>—</td><td>09/7/16</td><td>Rev Draft</td></tr><tr><td>—</td><td>1/9/17</td><td>Rev Draft</td></tr><tr><td>—</td><td>6/6/17</td><td>Rev Draft</td></tr><tr><td>—</td><td>9/12/17</td><td>Rev Draft</td></tr><tr><td>—</td><td>11/29/17</td><td>Rev Draft</td></tr><tr><td>—</td><td>12/29/17</td><td>Rev Draft</td></tr><tr><td>—</td><td>01/18/18</td><td>Rev Draft</td></tr><tr><td>—</td><td>02/15/18</td><td>Rev Draft</td></tr><tr><td>—</td><td>05/04/18</td><td>Rev Draft</td></tr></table>		#	DATE	REVISION	—	02/18/14	Draft	—	02/21/14	Rev Draft	—	03/26/15	Rev Draft	—	06/09/15	Rev Draft	—	01/22/16	Rev Draft	—	05/22/16	Rev Draft	—	09/7/16	Rev Draft	—	1/9/17	Rev Draft	—	6/6/17	Rev Draft	—	9/12/17	Rev Draft	—	11/29/17	Rev Draft	—	12/29/17	Rev Draft	—	01/18/18	Rev Draft	—	02/15/18	Rev Draft	—	05/04/18	Rev Draft
#	DATE	REVISION																																																	
—	02/18/14	Draft																																																	
—	02/21/14	Rev Draft																																																	
—	03/26/15	Rev Draft																																																	
—	06/09/15	Rev Draft																																																	
—	01/22/16	Rev Draft																																																	
—	05/22/16	Rev Draft																																																	
—	09/7/16	Rev Draft																																																	
—	1/9/17	Rev Draft																																																	
—	6/6/17	Rev Draft																																																	
—	9/12/17	Rev Draft																																																	
—	11/29/17	Rev Draft																																																	
—	12/29/17	Rev Draft																																																	
—	01/18/18	Rev Draft																																																	
—	02/15/18	Rev Draft																																																	
—	05/04/18	Rev Draft																																																	
		LOCATION INFO																																																	
		<div>D.O.B. Address: 400 West 61st Street</div> <div>New York, NY 10069</div> <div>Block: 1171</div> <div>Lot: 154</div> <div>Zoning District: C4-7</div> <div>Map: 8C</div> <div>BIN #: 1089723</div> <div>Height: 37 stories @ 478'-0"</div> <div><div><div></div><div>North</div></div><div></div></div>																																																	
		PROJECT																																																	
		<div>NEW 37 STORY RESIDENTIAL BLDG</div> <div>400 WEST 61ST STREET</div> <div>NEW YORK, NY 10069</div>																																																	
		DRAWING NAME																																																	
		<div>GENERAL INFORMATION</div> <div>&amp; SAFETY NOTES</div>																																																	
SEAL		DATE: JUNE 4, 2018																																																	
<div><div><div>John Young, RA</div><div></div><div>APPROVED</div><div>AMENDED PLAN</div><div>07/03/2018</div><div>BEST SSP</div></div></div>		<div>REVIEWED BY: WA</div> <div>DRAWN BY: ML/CJL/MN</div> <div>SCALE: N/A</div> <div>DWG NUMBER: SSP-001.11</div> <div><small>CRSG-100-000000</small></div> <div><small>Riverside Center Building #1 Site Safety Plan - 11.09.17.dwg</small></div>																																																	
<div><small>© CRSG 2014</small></div> <div><small>It is a violation of the law to alter this document in hard copy or electronic format (the "document") in any way. Use or modification to this document is at the sole risk and liability of the user. The user shall, to the fullest extent of the law, hold CRSG harmless from any claims, liabilities or damages including legal fees that may be incurred as a result of any unauthorized or improper use or modification of this document.</small></div>																																																			



MATERIAL HANDLING NOTES

- OVERHEAD PROTECTION WILL BE PROVIDED ON TOP OF HOIST CARS.
- NO LOADS SHALL BE SWUNG OVER THE HOIST CARS OR COMMON PLATFORM AT ANY TIME WHEN IN OPERATION/OCCUPIED.
- AT NO TIME SHALL ANY CONSTRUCTION EQUIPMENT COME WITHIN TWO FEET AND SIX INCHES OR THIRTY INCHES OF ANY PART OF THE HOIST (EXCLUDING SETUP & JUMPING OF THE HOIST).
- A PROTOCOL MUST BE ESTABLISHED (SEE BELOW) FOR ANY TIME CONSTRUCTION EQUIPMENT COMES WITHIN FIFTEEN FEET OF THE HOIST. THIS IS A MINIMUM STANDARD, IF ANY EQUIPMENT IS TO BE USED WITHIN THE FIFTEEN FOOT BUFFER IT MUST BE INCLUDED IN THE PLAN.
- ALL SIGNAL PERSONNEL AND HOIST OPERATORS MUST BE IN RADIO COMMUNICATION STANDARD, IF ANY EQUIPMENT IS TO BE USED WITHIN THE FIFTEEN FOOT BUFFER IT MUST BE INCLUDED IN THE PLAN.
- AN AIRHORN SHALL BE BLOWN PRIOR TO EACH PICK.
- NO STORAGE OF EQUIPMENT, DEBRIS, OR MATERIALS ON THE COMMON PLATFORM.
- WHENEVER A PIECE OF CONSTRUCTION EQUIPMENT COMES WITHIN FIFTEEN FEET OF THE HOIST, AT LEAST ONE SIGNAL PERSON MUST BE ASSIGNED TO THAT OPERATION.
- HOIST WILL BE MAINTAINED WITHIN 75'-0" OR 7 FLOORS OF THE WORKING DECK.
- THE CONTRACTOR MUST INFORM SITE SAFETY MANAGER WHEN IT IS NECESSARY FOR LOADED CRANE BOOM TO SWING OVER HOIST COMPLEX.
- IF IT IS NECESSARY FOR THE LOADED CRANE BOOM TO SWING OVER HOIST COMPLEX, THE CONTRACTOR WILL INSTRUCT ALL HOIST CARS TO BE BROUGHT DOWN TO GRADE AND THE HOIST COMPLEX WILL BE CLOSED. TIME WILL BE LOGGED BY CRANE SAFETY COORDINATOR.
- PRIMARY CRANE SAFETY COORDINATOR AND/OR ALTERNATIVE CRANE SAFETY COORDINATOR WILL INFORM SITE SAFETY MANAGER WHEN BOOM IS CLEAR OF HOIST & HOIST COMPLEX. CRANE SAFETY COORDINATOR WILL THEN ALLOW HOIST TO RESUME NORMAL DUTY AND TIME WILL BE LOGGED.
- AT ALL TIMES, HOIST CARS CAN BE RETURNED TO EMERGENCY SERVICE AS NEEDED.

REVISIONS

- CRANE & PICK UP TRUCK ADDED
- OHP REMOVED
- TOWER CRANE REMOVED
- PICK UP AREA REMOVED
- EQUIPMENT LIST REVISED

400 West 61st St Building 1  
New 37 Story Residential Bldg.

Site Coordination Phasing Plan

LEGEND

- 8'H PLYWOOD CONSTRUCTION FENCE
- GUARDRAILS (DETAIL 1.5)
- D.O.T. APPROVED JERSEY BARRIERS
- 8' H CHAIN-LINK FENCE ABOVE D.O.T. APPROVED JERSEY BARRIERS (APPROVED BY J.C. ON 09/23/15)
- 8' H CHAIN-LINK FENCE (APPROVED BY J.C. ON 09/23/15)
- 8' H PLYWOOD FENCE ABOVE D.O.T. APPROVED JERSEY BARRIERS
- D.O.T. APPROVED MOVABLE WATERFILLED BARRIERS
- PROPERTY LINE
- HIGHWAY REINFORCED SLAB
- TRAFFIC LIGHT
- FIRE HYDRANT
- STREET LIGHT
- BUILDING NOT IN SCOPE
- SIDEWALK SHED
- OVERHEAD PROTECTION
- EXISTING CHAIN-LINK FENCE
- PICK AREA
- MOBILE CRANE LOCATIONS
- MONORAIL SYSTEM UNDER JOB # 140705707-01-EQ-OT

PROPOSED SIGNAGE

- REQUIRED CONSTRUCTION SIGNAGE
- SIDEWALK CLOSED PLEASE USE WALKWAY
- LANE CLOSED PLEASE MERGE RIGHT
- SIAMSESE CONNECTION WITH RED LIGHT NO OBSTRUCTION ANY TIME
- NO STANDING ANYTIME
- SIDEWALK CLOSED PLEASE USE OTHER SIDE (DOT APPROVED SIGN)
- SIDEWALK CLOSED PLEASE USE W 62ND STREET
- STREET CLOSURE

EQUIPMENT LIST

- PILING RIG
- WINCHES
- CONCRETE TRUCKS
- WATER PUMPS
- GENERATORS
- CONCRETE BREAKER
- CONCRETE PUMPS
- WASHOUT BOX
- BOOM TRUCK
- DELIVERY TRUCK
- EXCAVATOR
- FORK LIFTS
- PERSONAL LIFTS
- STORAGE CAGES
- MOBILE CRANE LIEBHERR 1130.5-1
- TOWER CRANE FAVCO M4400
- MINI MOBILE CRANE MANITEX
- VALLA 25 EL/JEKKO MPK20/ JEKKO
- SPD 360
- LIFTING GRAB
- MOBILE CRANE TADANO GR-500XL

NOTES

- (2) VIABLE MEANS OF EGRESS TO BE MAINTAINED AT ALL TIMES.
- SHORING, SHEETING & BRACING AS PER APPROVED SUPPORT OF EXCAVATION DRAWINGS.
- ALL RAMPS TO ADHERE TO ALL REQUIREMENTS OF NYC BC 3315.
- LOCATION OF RAMPS & EGRESS STAIRS/LADDERS MAY VARY DUE TO SITE LOGISTICS NEEDS.
- ALL TRAFFIC BARRIERS IN THE STREET MUST COMPLY WITH DOT REGULATIONS AND MANUFACTURES SPECIFICATIONS
- 400 W 61ST STREET - CHAIN LINK FENCE WITH DEBRIS NETTING APPROVED BY JOHN CHIUSANO ON 9/23/15.
- NO CRANE OPERATIONS TO START UNTIL THE SITE SAFETY PLAN IS IN COMPLIANCE WITH LATEST APPROVED CN, OW "LIMITED USE" & MASTER RIGGER OPERATIONS
- CRANE COORDINATION MEETING WILL BE HELD DAILY BY CRANE OPERATORS AND AT NO TIME WILL CRANES PICK LOADS OVER EACH OTHER
- ROOF SETBACKS SHALL BE USED AS MAKE UP AREAS. OHP OR CAZ WILL BE IN PLACE.
- LIGHTED STAIRWAYS TO COMPLY WITH SECTION 3303.11
- STANDPIPE TO COMPLY WITH BC 905 AND NYC BUILDING CODE SECTION 3303.8
- HOIST ON SITE TO BE USED AS ELEVATOR IN READINESS FOR FDNY
- TURNSTILES SHOULD NOT BE USED AS MEANS OF EGRESS. IN CASE OF EMERGENCY, ALL DOORS OR EXITS SHOULD BE AVAILABLE UNOBSTRUCTED FOR EVACUATION
- THIS PHASE WILL FOLLOW ELEVATIONS SSP-300 TO SSP-302(SUPERSTRUCTURE PHASES) AND ONCE SUPERSTRUCTURE WORK IS COMPLETED IT WILL FOLLOW ELEVATIONS SSP-303 TO SSP-305.
- OVERHEAD PROTECTION WILL BE RELOCATED AS NEEDED.
- CONTROL ACCESS ZONE TO BE RELOCATED AS CONSTRUCTION PROGRESSES.

OWNER  
RCB1 NOMINEE LLC, A DELAWARE LIM  
125 HIGH STREET  
BOSTON, MA 02110  
212-878-3617

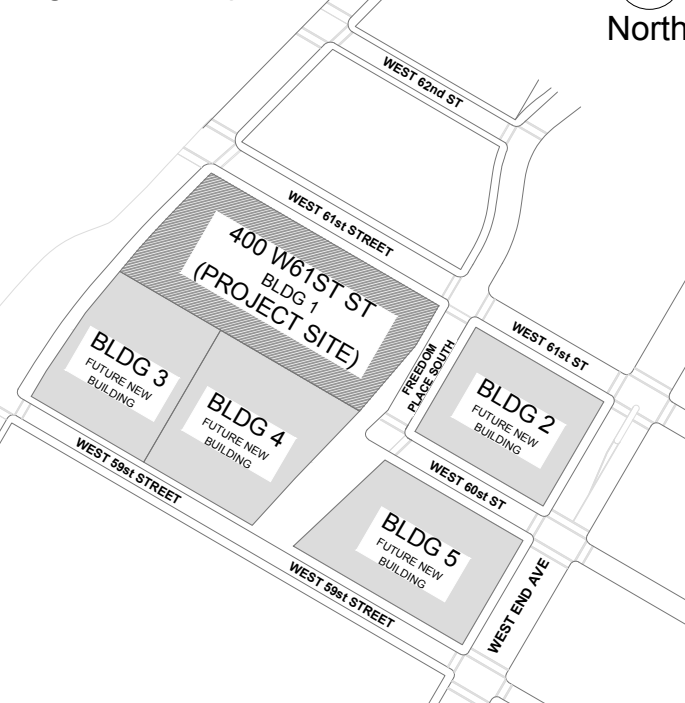
ENGINEER / DESIGNER  
CR SAFETY  
construction & safety group  
226 East Merrick Road  
Valley Stream, NY 11580  
(516) 256-0317

CONTRACTOR  
TISHMAN  
100 Park Ave  
New York, NY 10017  
(917) 273-3450  
Contact: ROBERT HIGGINS

REVISIONS		
#:	DATE:	REVISION:
1	02/18/14	Draft
2	02/21/14	Rev Draft
3	03/26/15	Rev Draft
4	06/09/15	Rev Draft
5	01/22/16	Rev Draft
6	05/22/16	Rev Draft
7	09/17/16	Rev Draft
8	1/9/17	Rev Draft
9	6/6/17	Rev Draft
10	9/12/17	Rev Draft
11	11/28/17	Rev Draft
12	12/20/17	Rev Draft
13	01/18/18	Rev Draft
14	02/15/18	Rev Draft
15	06/04/18	Rev Draft

LOCATION INFO  
D.O.B. Address: 400 West 61st Street  
New York, NY 10069

Block: 1171  
Lot: 154  
Zoning District: C4-7  
Map: 8C  
BIN #: 1089723  
Height: 37 stories @ 478'-0"



PROJECT  
NEW 37 STORY RESIDENTIAL BLDG  
400 WEST 61ST STREET  
NEW YORK, NY 10069

DRAWING NAME

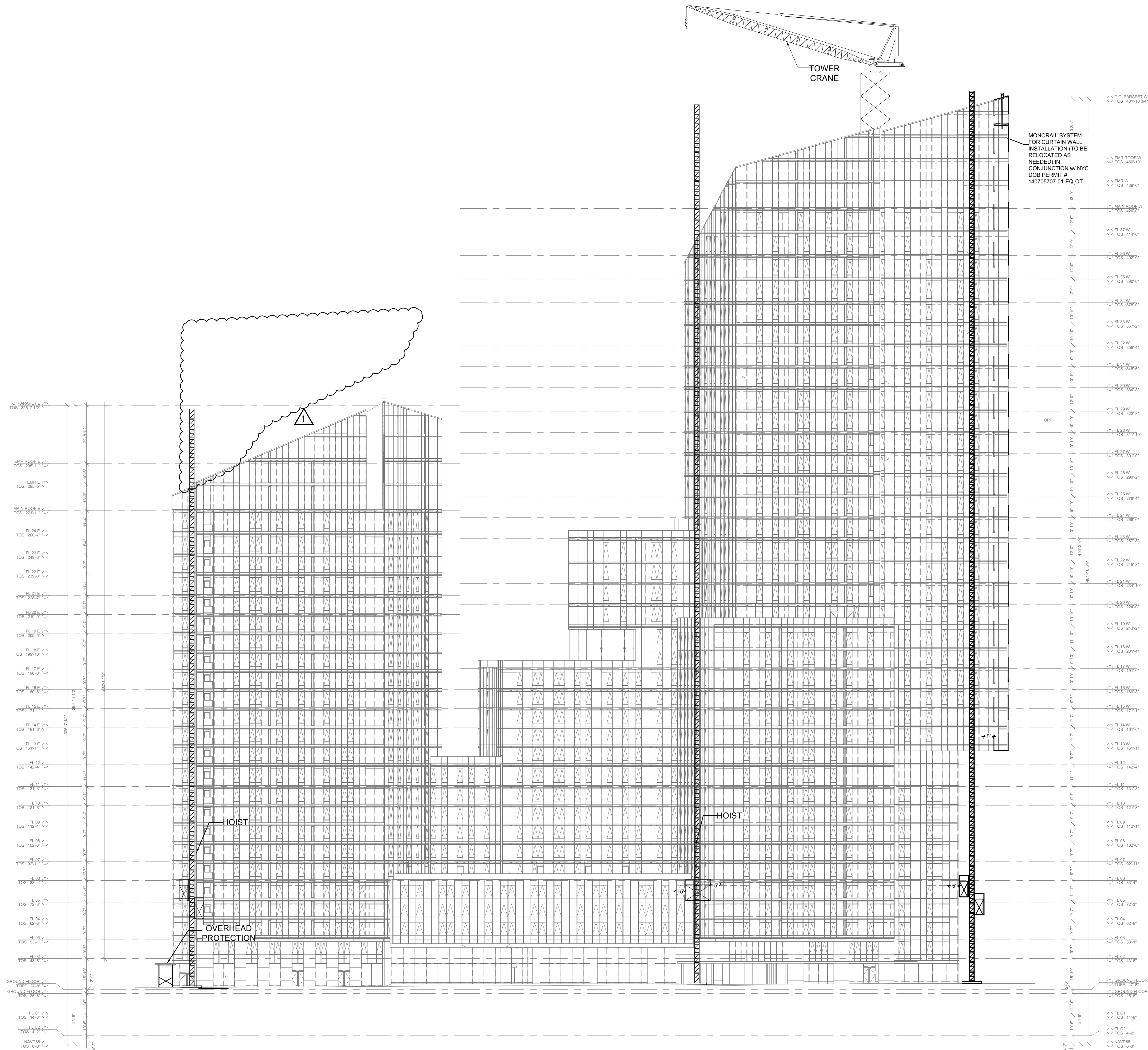
FACADE INSTALLATION  
PHASE (5TH FLOOR  
SHOWN) SITE SAFETY PLAN

SEAL  
John Young, RA  
APPROVED  
AMENDED PLAN  
07/03/2018  
BEST SSP

DATE: JUNE 4, 2018  
REVIEWED BY: WA  
DRAWN BY: ML/CJL/MN  
SCALE: SCALER  
DWG NUMBER: SSP-104.04  
CADD FILE NAME: Riverside Center Building #1 Site Safety Plan- 11-09-17.dwg

© CRSG 2014  
It is a violation of the law to alter this document in hard copy or electronic format (the "document") in any way. Use or modifications to this document is at the sole risk and liability of the user. The user shall, to the fullest extent of the law, hold CRSG harmless from any claims, liabilities or damages including legal fees that may be incurred as a result of any unauthorized or improper use or modification of this document.

1 NORTH ELEVATION



400  
**West 61st St**  
Building 1

# Site Coordination Phasing Plan

## New 37 Story Residential Bldg.

## LEGEND

The diagram illustrates four different protection systems for construction or industrial sites:

- ROOFTOP PROTECTION:** A horizontal cross-section showing a pattern of circular elements (possibly pipes or cables) within a rectangular frame.
- SIDEWALK SHED:** A side view of a structure with a flat roof supported by two vertical posts, each with a cross-brace.
- OVERHEAD PROTECTION:** A side view of a structure with a flat roof supported by two vertical posts, each with a cross-brace, similar to the Sidewalk Shed but potentially representing a different configuration or scale.
- MONORAIL SYSTEM:** A side view of a horizontal beam with multiple vertical supports (monorails) underneath it.

Below the diagrams, the text reads: MONORAIL SYSTEM UNDER JOB # 140705707-01-EQ-OT

OWNER

**RCB1 NOMINEE LLC, A DELAWARE LIM**  
125 HIGH STREET  
BOSTON, MA 02110  
212-878-3617

ENGINEER / DESIGNER



CONTRACTOR



100 Park Ave  
New York, NY 10017  
(212) 273-3450  
Contact: ROBERT HIGGINS

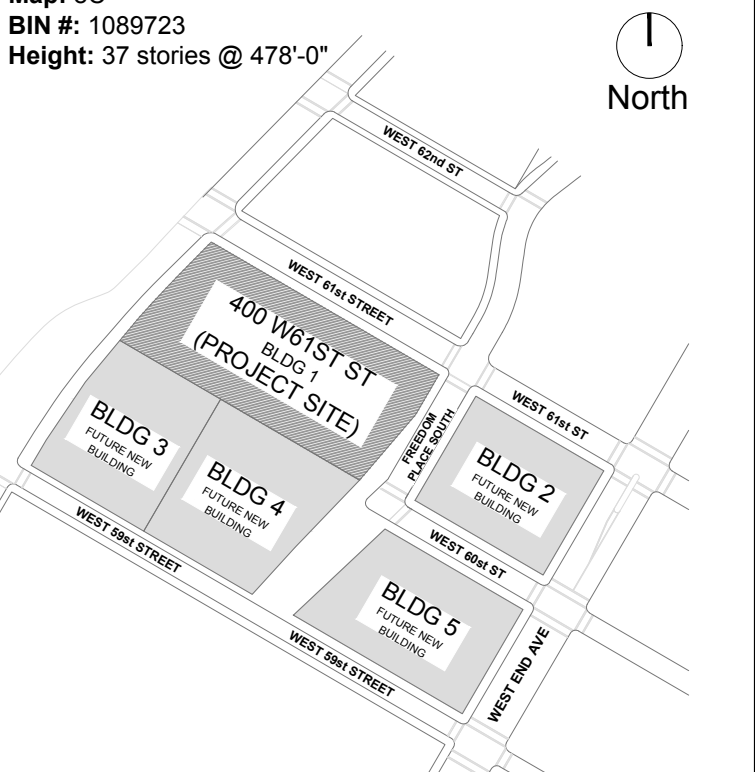
## REVISIONS

#:	DATE:	REVISION:
	02/18/14	Draft
	02/21/14	Rev Draft
	03/26/15	Rev Draft
	06/09/15	Rev Draft
	01/22/16	Rev Draft
	05/02/16	Rev Draft
	09/17/16	Rev Draft
	1/9/17	Rev Draft
	5/6/17	Rev Draft
	3/12/17	Rev Draft
	11/28/17	Rev Draft
	12/20/17	Rev Draft
	01/18/18	Rev Draft
	02/15/18	Rev Draft
	06/04/18	Rev Draft

## LOCATION INFO

**D.O.B. Address:** 400 West 61st Street  
New York, NY 10069

**Block:** 1171  
**Lot:** 154  
**Zoning District:** C4-7  
**Map:** 8C  
**BIN #:** 1089723  
**Height:** 37 stories @ 478'



## NOTES

1. VERTICAL NETTING TO BE INSTALLED AS PER NYC BC 3308.5.
  2. HORIZONTAL NETTING TO FOLLOW SECTION BC 3308.
- PROTECTION OF UNENCLOSED PERIMETERS.
3. 3308.6.2.6 PROJECTION OF NETS IN COMPLIANCE WITH ANSI/ASSE A10.11 REQUIREMENTS.

## PROJECT

**NEW 37 STORY RESIDENTIAL BLDG**  
400 WEST 61ST STREET  
NEW YORK, NY 10069

## DRAWING NAME

NORTH FACADE ELEVATION  
(FACADE INSTALLATION  
PHASE)

## SEAL

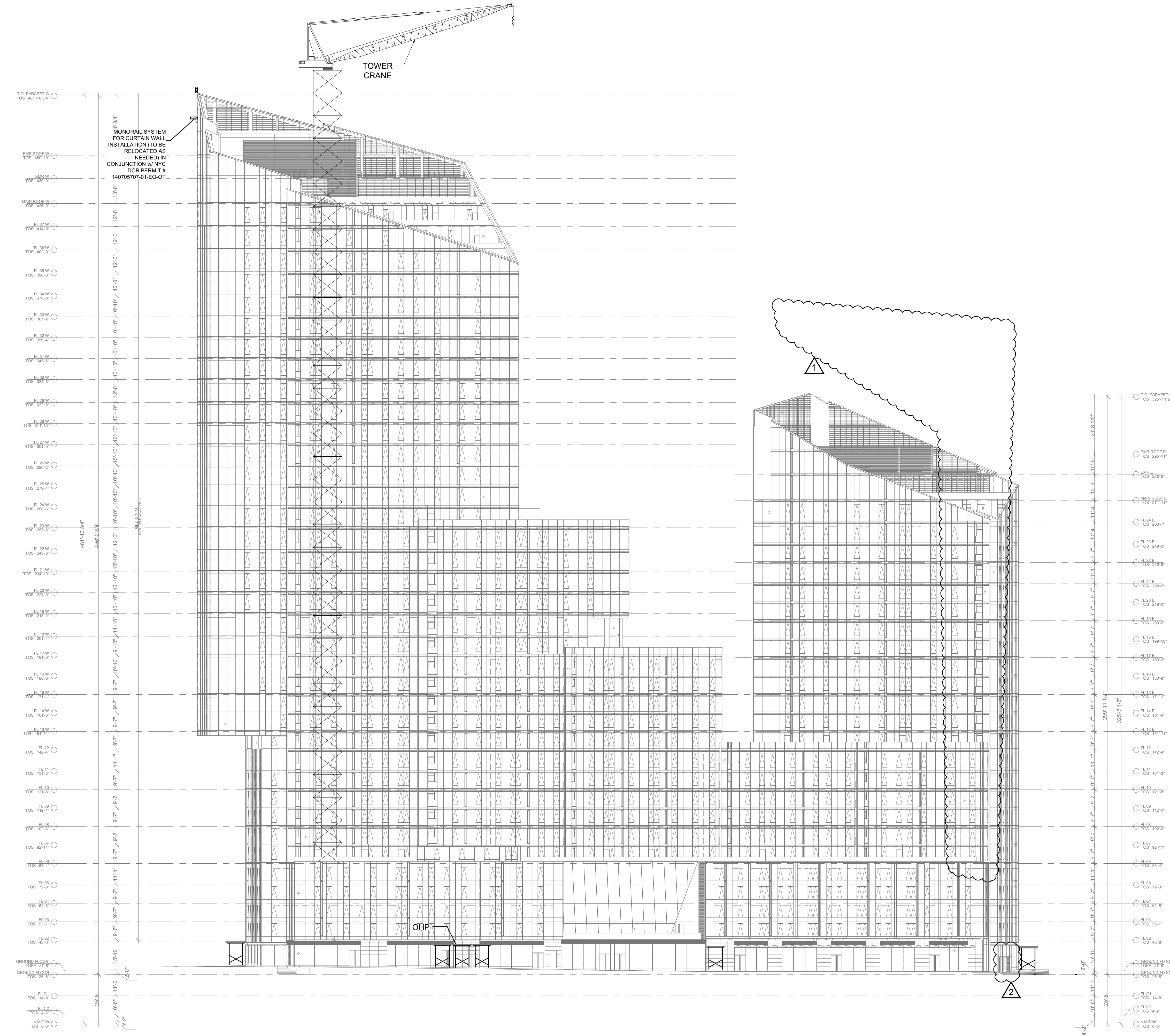


JUNE 4, 2018  
 ED BY: WA  
 BY: ML/CJL/MN  
 1/32" = 1'-0"

NUMBER: SP-303.02

 **CRSG 2014**  
It is a violation of the law to alter this document in hard copy or electronic format (the "document") in any way. Use or modifications to this document is at the sole risk and liability of the user. The user shall, to the fullest extent of the law, hold CRSG harmless from any claims, liabilities or damages including legal fees that may be incurred as a result of any unauthorized or improper use or modification of this document.

2) SOUTH ELEVATION



400  
West 61st St  
Building 1

Site Coordination  
Phasing Plan

New 37 Story Residential Bldg.

LEGEND

- ROOFTOP PROTECTION
- SIDEWALK SHED
- OVERHEAD PROTECTION
- MONORAIL SYSTEM  
UNDER JOB # 140705707-01-EQ-OT

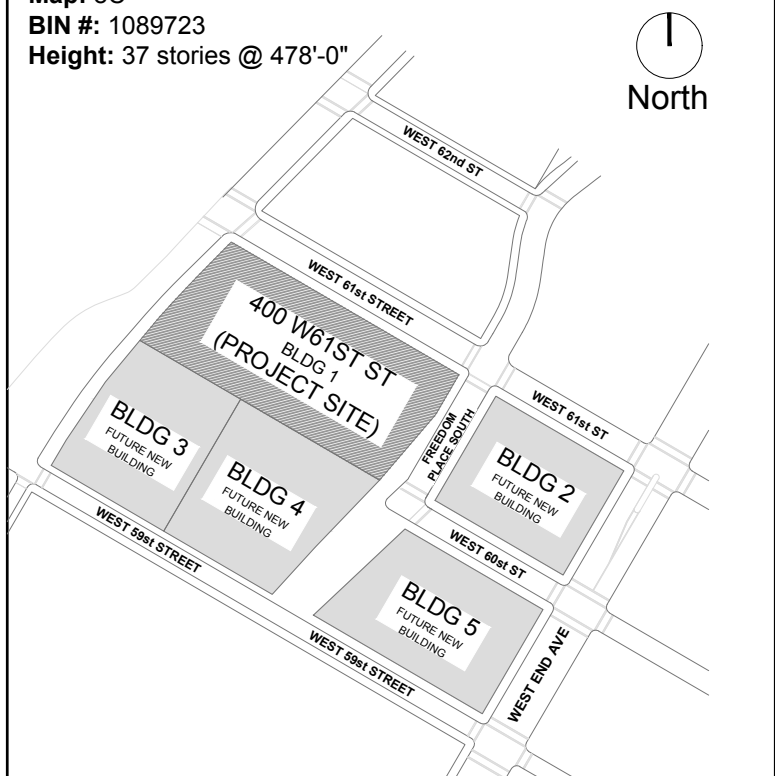
OWNER  
**RCB1 NOMINEE LLC, A DELAWARE LIM**  
125 HIGH STREET  
BOSTON, MA 02110  
212-878-3617

ENGINEER / DESIGNER  
**CR SAFETY**  
construction &  
reality safety group  
226 East Merrick Road  
Valley Stream, NY 11580  
(516) 256-0317

CONTRACTOR  
**TISHMAN**  
100 Park Ave  
New York, NY 10017  
(917) 273-3450  
Contact: ROBERT HIGGINS

REVISIONS		
#:	DATE:	REVISION:
02/18/14	Draft	
02/21/14	Rev Draft	
03/26/15	Rev Draft	
06/08/15	Rev Draft	
01/22/16	Rev Draft	
05/22/16	Rev Draft	
09/7/16	Rev Draft	
1/9/17	Rev Draft	
6/6/17	Rev Draft	
9/12/17	Rev Draft	
11/28/17	Rev Draft	
12/20/17	Rev Draft	
01/18/18	Rev Draft	
02/15/18	Rev Draft	
06/04/18	Rev Draft	

LOCATION INFO  
**D.O.B. Address:** 400 West 61st Street  
New York, NY 10069  
**Block:** 1171  
**Lot:** 154  
**Zoning District:** C4-7  
**Map:** 8C  
**BIN #:** 1089723  
**Height:** 37 stories @ 478'-0"



NOTES

- VERTICAL NETTING TO BE INSTALLED AS PER NYC BC 3308.5.
- HORIZONTAL NETTING TO FOLLOW SECTION BC 3308. PROTECTION OF UNENCLOSED PERIMETERS.
- 3308.6.2.6 PROJECTION OF NETS IN COMPLIANCE WITH ANSI/ASSE A10.11 REQUIREMENTS.

PROJECT  
**NEW 37 STORY RESIDENTIAL BLDG**  
400 WEST 61ST STREET  
NEW YORK, NY 10069

DRAWING NAME  
**SOUTH FACADE ELEVATION  
(FACADE INSTALLATION  
PHASE)**

REVISIONS

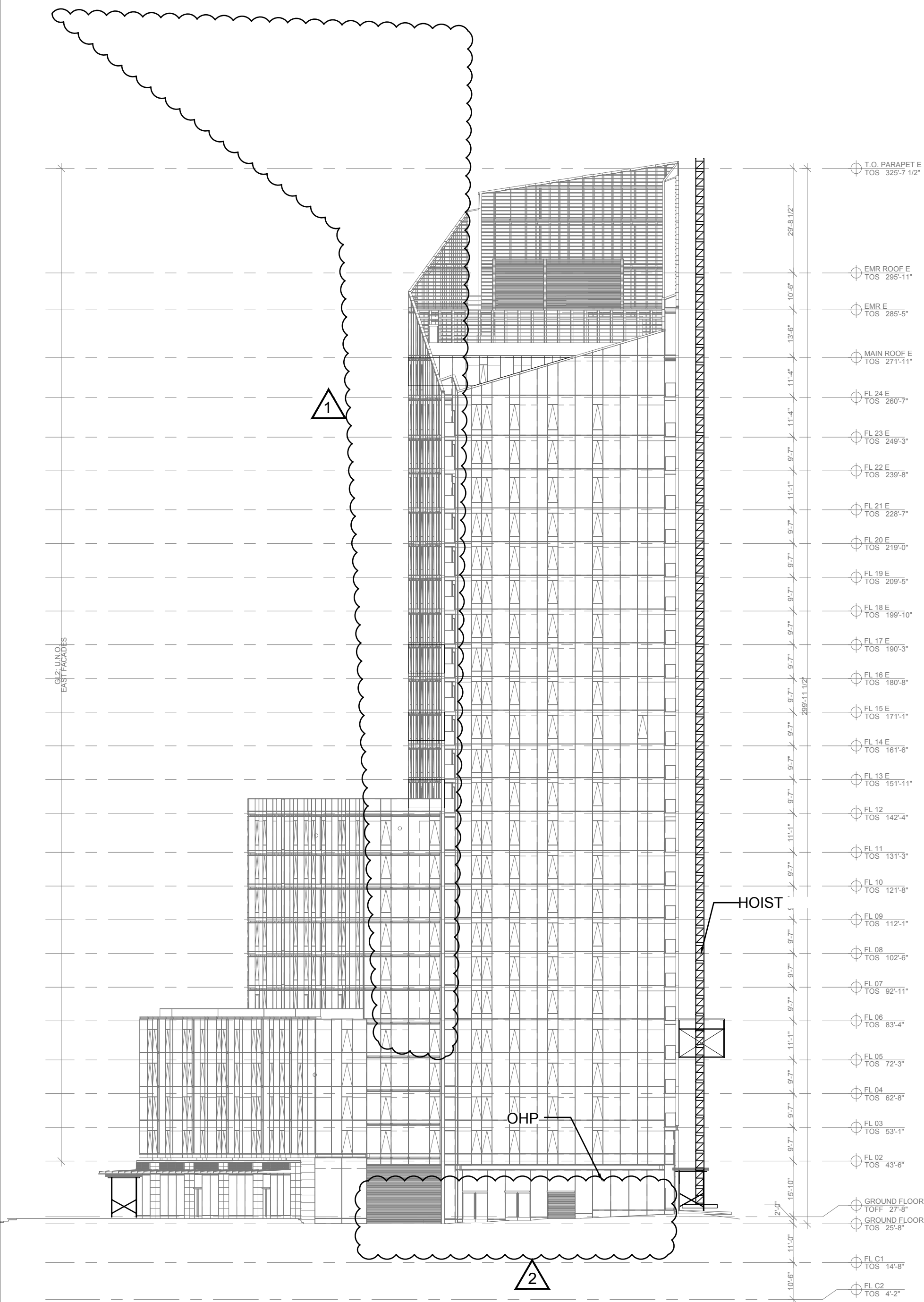
- 1) TOWER CRANE REMOVED
- 2) OHP REMOVED

SEAL  
**John Young, RA**  
**APPROVED**  
**AMENDED PLAN**  
**07/03/2018**  
**BEST SSP**

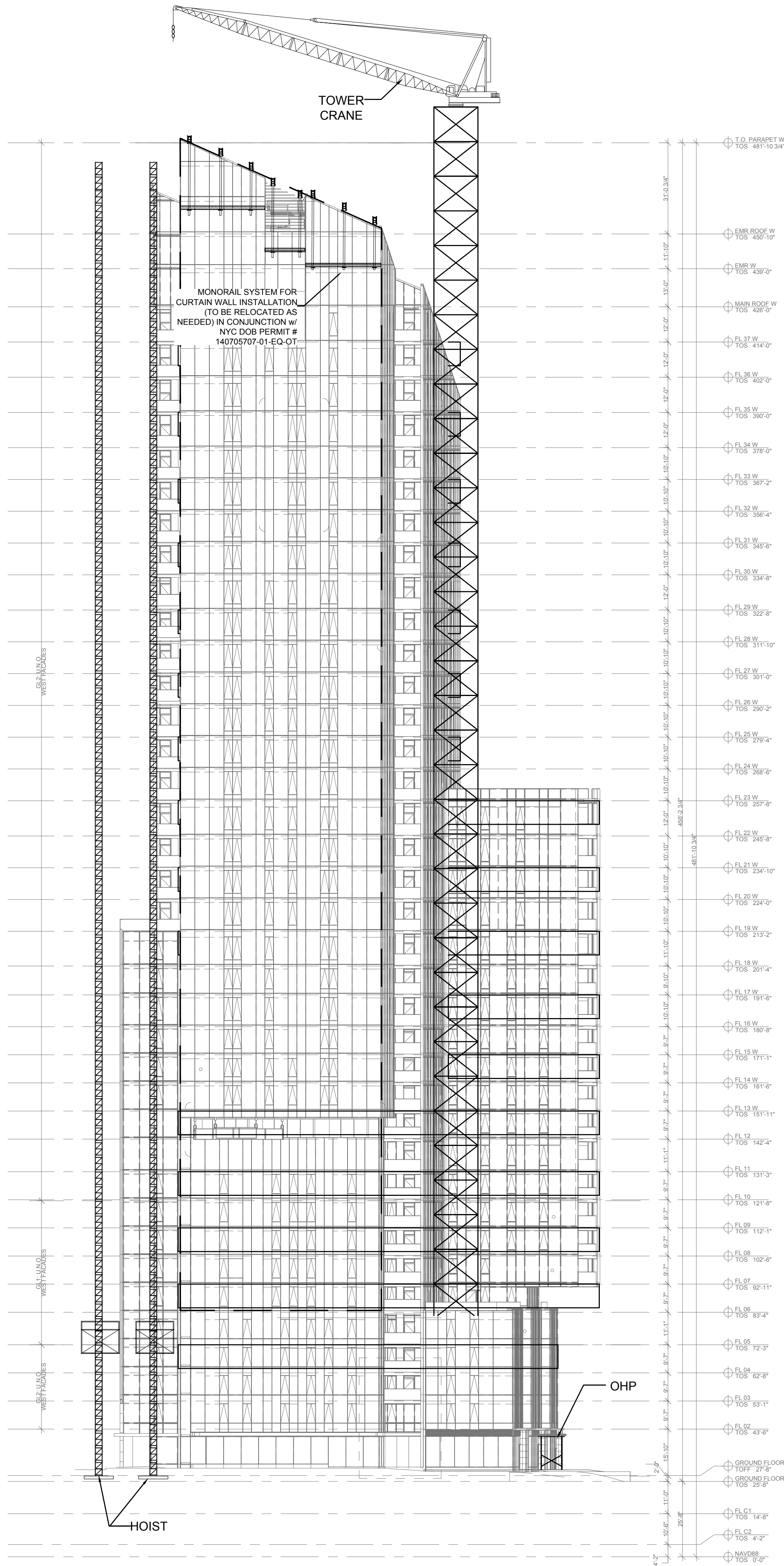
DATE: JUNE 4, 2018  
REVIEWED BY: WA  
DRAWN BY: ML/CJL/MN  
SCALE: 1/32" = 1'-0"  
DWG NUMBER: **SSP-304.02**  
CADD FILE NAME: Riverside Center Building #1 Site Safety Plan-11-09-17.dwg

© CRSG 2014  
It is a violation of the law to alter this document in hard copy or electronic format (the "document") in any way. Use or modifications to this document is at the sole risk and liability of the user. The user shall, to the fullest extent of the law, hold CRSG harmless from any claims, liabilities or damages including legal fees that may be incurred as a result of any unauthorized or improper use or modification of this document.

3 EAST ELEVATION



4 WEST ELEVATION



400  
West 61st St  
Building 1  
New 37 Story Residential Bldg.

Site Coordination  
Phasing Plan

LEGEND

- ROOFTOP PROTECTION
- SIDEWALK SHED
- OVERHEAD PROTECTION
- MONORAIL SYSTEM  
UNDER JOB # 140705707-01-EQ-OT

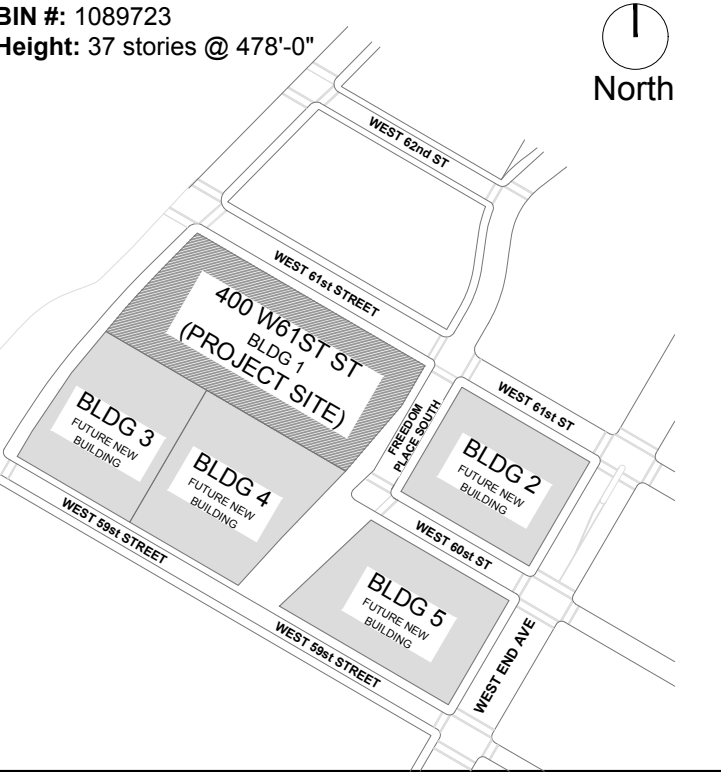
OWNER  
RCB1 NOMINEE LLC, A DELAWARE LIM  
125 HIGH STREET  
BOSTON, MA 02110  
212-878-3617

ENGINEER / DESIGNER  
CR SAFETY  
construction &  
safety group  
226 East Merrick Road  
Valley Stream, NY 11580  
(516) 256-0317

CONTRACTOR  
TISHMAN  
100 Park Ave  
New York, NY 10017  
(917) 273-3450  
Contact: ROBERT HIGGINS

REVISIONS		
#:	DATE:	REVISION:
1	02/18/14	Draft
2	02/21/14	Rev Draft
3	03/26/15	Rev Draft
4	06/08/15	Rev Draft
5	01/22/16	Rev Draft
6	05/22/16	Rev Draft
7	09/7/16	Rev Draft
8	1/9/17	Rev Draft
9	6/6/17	Rev Draft
10	9/12/17	Rev Draft
11	11/28/17	Rev Draft
12	12/20/17	Rev Draft
13	01/18/18	Rev Draft
14	02/15/18	Rev Draft
15	06/04/18	Rev Draft

LOCATION INFO  
D.O.B. Address: 400 West 61st Street  
New York, NY 10069  
Block: 1171  
Lot: 154  
Zoning District: C4-7  
Map: 8C  
BIN #: 1089723  
Height: 37 stories @ 478'-0"



NOTES

1. VERTICAL NETTING TO BE INSTALLED AS PER NYC BC 3308.5.
2. HORIZONTAL NETTING TO FOLLOW SECTION BC 3308. PROTECTION OF UNENCLOSED PERIMETERS.
3. 3308.6.2.6 PROJECTION OF NETS IN COMPLIANCE WITH ANSI/ASSE A10.11 REQUIREMENTS.

PROJECT  
NEW 37 STORY RESIDENTIAL BLDG  
400 WEST 61ST STREET  
NEW YORK, NY 10069

DRAWING NAME  
EAST & WEST FACADE  
ELEVATION

SEAL  
John Young, RA  
APPROVED  
AMENDED PLAN  
07/03/2018  
BEST SSP

DATE: JUNE 4, 2018  
REVIEWED BY: WA  
DRAWN BY: ML/CJL/MN  
SCALE: 1/32" = 1'-0"  
DWG NUMBER: SSP-305.02  
Riverside Center Building #1 Site Safety Plan-11-09-17.dwg

REVISIONS

- 1 TOWER CRANE REMOVED
- 2 OHP REMOVED

© CRSG 2014  
It is a violation of the law to alter this document in hard copy or electronic format (the "document") in any way. Use or modifications to this document is at the sole risk and liability of the user. The user shall, to the fullest extent of the law, hold CRSG harmless from any claims, liabilities or damages including legal fees that may be incurred as a result of any unauthorized or improper use or modification of this document.